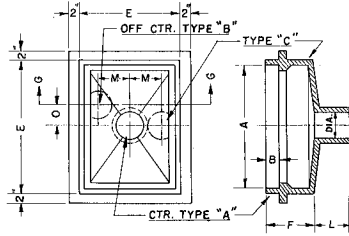


■ Note: When specifying/ordering grates, refer to "Choosing the Proper Inlet Grate" on pages 125-126.
 For a complete listing of FREE OPEN AREAS and WEIR PERIMETERS of all NEENAH grates, refer to pages 327-332.

R-4004 Series Scupper Frame, Grate

Heavy Duty

CATALOG NUMBER	GRATE TYPE	SQ. FT. OPEN	WEIR PERIMETER LINEAL FEET
R-4004-B	B	1.5	7.4
R-4004-C	B	1.5	7.4
R-4004-G1	B or D	1.9	7.3



Spigot variations adapted to facilitate placement on overhead or bridge superstructures.

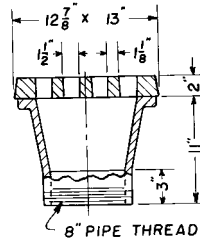
Catalog No.	Dimensions in inches								Spigot Type
	A	B	E	F	L	Dia.	O	M	
R-4004-B	20 3/8 x 23 3/4	2	22 5/8 x 26	6 3/4	5 1/4	8	5	6 5/16	B
R-4004-C	20 3/8 x 23 3/4	2	22 5/8 x 26	6 3/4	5 1/4	8	-	6 5/16	C
R-4004-G1 *	22 x 22	1 3/4	24 1/4 x 24 1/4	7	3 3/4	8	-	5	C

* Inside caulk

R-4005-A2 Scupper Frame, Grate

Heavy Duty

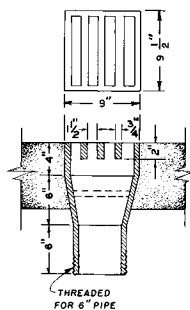
CATALOG NUMBER	GRATE TYPE	SQ. FT. OPEN	WEIR PERIMETER LINEAL FEET
R-4005-A2	B	0.4	4.3



R-4006 Bridge Scupper

Heavy Duty

CATALOG NUMBER	GRATE TYPE	SQ. FT. OPEN	WEIR PERIMETER LINEAL FEET
R-4006	D	0.3	3.1



Integral cast bars.

Supplied By:

**TRENCHDRAIN
SUPPLY**

877-903-7246

www.trenchdrainsupply.com